

(02) 9709 4099



ACTION

RECOVERY SERVICES PTY. LTD.

A.B.N 25 000 874 224

CRANES

Email: cranes@actioncranes.com.au www.actioncranes.com.au

(02) 9709 4099

Fax: (02) 9708 1983

PO BOX 3365
BANKSTOWN CENTRO
NSW 2200

30 GOW ST
PADSTOW NSW 2211

LOAD CHART



TECHNICAL SPECIFICATIONS		Maximum lifting capacity / radius: 200t / 3m
Main boom:	14.7 - 60m	
Main boom extension:	9.7 – 38.5m	
Maximum system length:	60 + 38.5 = 98.5m	
Overall length:	14.712m (in dolly 22m)	
Carrier length:	13.6m	
Turning radius over boom head:	13.35m	
Carrier engine:	DaimlerChrysler OM 502 LA (380 kW / 516 PS / hp)	
Superstructure engine:	DaimlerChrysler OM 906 LA (170 kW / 231 PS / hp)	
Maximum travel speed:	85 km/h	
Drive / steer:	10 x 8 x 8	
Tyres:	16.00	
Maximum gradeability:	> 70%	
Maximum counterweight:	64t	

(02) 9709 4099



ACTION

RECOVERY SERVICES PTY. LTD.

A.B.N 25 000 874 224

CRANES

Email: cranes@actioncranes.com.au www.actioncranes.com.au

(02) 9709 4099
Fax: (02) 9708 1983

PO BOX 3365
BANKSTOWN CENTRO
NSW 2200

30 GOW ST
PADSTOW NSW 2211

64t - Lifting Capacities												360°
Radius m	Mainboom											
	m	14.7 t	14.7 t	19.9 t	24.9 t	29.9 t	35.0 t	40.1 t	45.1 t	50.2 t	55.2 t	60.0 t
3	3)	200.0	136.9**	134.0**	100.0**	-	-	-	-	-	-	-
3.5	3)	175.0	125.5**	125.2**	96.5	-	-	-	-	-	-	-
4	3)	153.0	115.7**	115.4**	93.1	69.2	-	-	-	-	-	-
4.5	3)	135.0	107.2**	107.0**	89.7	67.0	-	-	-	-	-	-
5	3)	120.0	99.8**	99.6**	86.4	64.8	-	-	-	-	-	-
6		99.0	87.5	87.3	82.5	60.8	60.0	-	-	-	-	-
7		85.0	77.7	77.5	75.5	57.0	55.0	48.0	-	-	-	-
8		74.0	69.7	69.4	70.4	53.5	51.5	48.0	40.5	-	-	-
9		65.0	63.0	62.8	63.8	50.2	48.5	45.5	39.5	33.5	-	-
10		58.0	57.4	57.1	58.1	47.2	45.5	42.4	38.2	32.8	24.0	19.0
12		-	-	47.8	49.1	41.0	40.0	36.9	34.0	31.0	22.4	19.0
14		-	-	39.2	40.5	37.2	35.9	32.7	30.4	28.7	21.0	17.5
16		-	-	34.7	34.1	33.4	32.0	29.5	27.3	26.1	19.8	17.0
18		-	-	-	28.9	28.8	27.2	26.7	24.8	23.5	18.6	16.3
20		-	-	-	24.5	25.3	24.1	24.0	22.7	21.1	17.5	15.2
22		-	-	-	-	21.7	21.7	20.5	20.8	19.1	16.5	14.1
24		-	-	-	-	18.9	18.9	17.6	18.2	17.5	15.6	13.0
26		-	-	-	-	16.6	16.6	15.3	15.9	16.2	14.7	12.0
28		-	-	-	-	-	15.0	13.4	13.9	14.3	13.9	11.1
30		-	-	-	-	-	13.9	12.0	12.6	12.7	13.1	10.4
32		-	-	-	-	-	-	11.4	11.2	11.6	11.9	9.8
34		-	-	-	-	-	-	10.7	9.9	10.3	10.6	9.1
36		-	-	-	-	-	-	-	8.7	9.1	9.4	8.4
38		-	-	-	-	-	-	-	8.2	8.1	8.4	7.9
40		-	-	-	-	-	-	-	7.8	7.2	7.5	7.4
42		-	-	-	-	-	-	-	-	6.4	6.7	6.7
44		-	-	-	-	-	-	-	-	5.7	6.0	6.0
46		-	-	-	-	-	-	-	-	-	5.4	5.3
48		-	-	-	-	-	-	-	-	-	4.8	4.8
50		-	-	-	-	-	-	-	-	-	-	4.2
52		-	-	-	-	-	-	-	-	-	-	3.7

3) Only 0° over rear

** Heavy lift attachment required

(02) 9709 4099



ACTION

RECOVERY SERVICES PTY. LTD.

A.B.N 25 000 874 224

CRANES

Email: cranes@actioncranes.com.au www.actioncranes.com.au

(02) 9709 4099
Fax: (02) 9708 1983

PO BOX 3365
BANKSTOWN CENTRO
NSW 2200

30 GOW ST
PADSTOW NSW 2211

40t - Lifting Capacities											360°
Mainboom											
Radius	m	14.7	19.9	24.9	29.9	35.0	40.1	45.1	50.2	55.2	60.0
m		t	t	t	t	t	t	t	t	t	t
3		132.8**	132.6**	100.0**	-	-	-	-	-	-	-
3.5		121.7**	121.5**	96.5	-	-	-	-	-	-	-
4		112.2**	111.9**	93.1	69.2	-	-	-	-	-	-
4.5		104.0**	103.7**	89.7	67.0	-	-	-	-	-	-
5		96.8	96.5	86.4	64.8	-	-	-	-	-	-
6		84.8	84.6	82.5	60.8	60.0	-	-	-	-	-
7		75.3	75.0	75.5	57.0	55.0	48.0	-	-	-	-
8		66.1	65.8	67.2	53.5	51.5	48.0	40.5	-	-	-
9		57.2	56.9	58.3	50.2	48.5	45.5	39.5	33.5	-	-
10		50.2	49.8	51.2	47.2	45.5	42.4	38.2	32.8	24.0	19.0
12		-	39.0	38.2	41.0	40.0	36.9	34.0	31.0	22.4	19.0
14		-	30.0	30.9	37.2	35.9	32.7	30.4	28.7	21.0	17.5
16		-	23.9	24.7	33.4	32.0	29.5	27.3	26.1	19.8	17.0
18		-	-	20.3	28.8	27.2	26.7	24.8	23.5	18.6	16.3
20		-	-	17.0	18.1	17.4	16.9	16.1	16.6	16.9	15.2
22		-	-	-	15.5	14.8	15.2	14.1	14.0	14.3	14.1
24		-	-	-	13.9	13.4	13.4	13.0	11.9	12.2	12.2
26		-	-	-	12.2	12.3	11.7	11.2	10.1	10.4	10.4
28		-	-	-	-	10.9	10.2	9.7	9.2	8.9*	8.9
30		-	-	-	-	9.7	8.9	8.4	7.9	8.2*	7.6
32		-	-	-	-	-	7.8	7.3	6.8	7.1*	6.5
34		-	-	-	-	-	6.9	6.4	5.9	6.1*	5.5
36		-	-	-	-	-	-	5.5	5.0	5.3*	4.7
38		-	-	-	-	-	-	4.8	4.3	4.5*	3.9
40		-	-	-	-	-	-	4.1	3.6	3.9*	3.3
42		-	-	-	-	-	-	-	3.1	3.3*	2.7
44		-	-	-	-	-	-	-	2.5	2.8*	2.2
46		-	-	-	-	-	-	-	-	-	1.7
48		-	-	-	-	-	-	-	-	-	1.3

3) Only 0° over rear

** Heavy lift attachment required



CRANES

30 GOW ST
PADSTOW NSW 2211

[illegible]



A.B.N 25 000 874 224

Email: cranes@actioncranes.com.au www.actioncranes.com.au

PADSTOW NSW 2211

[illegible]



A.B.N 25 000 874 224

Email: cranes@actioncranes.com.au www.actioncranes.com.au

PADSTOW NSW 2211

[illegible]



A.B.N 25 000 874 224

Email: cranes@actioncranes.com.au www.actioncranes.com.au

PADSTOW NSW 2211

[illegible]

(02) 9709 4099



ACTION

RECOVERY SERVICES PTY. LTD.

A.B.N 25 000 874 224

CRANES

Email: cranes@actioncranes.com.au www.actioncranes.com.au

(02) 9709 4099

Fax: (02) 9708 1983

PO BOX 3365
BANKSTOWN CENTRO
NSW 2200

30 GOW ST
PADSTOW NSW 2211

64 t

360°

DIN/ISO

60,0 m Hauptausleger · Main boom · Flèche principale

Ausladung Radius Portée m	26,5 m			Verlängerung · Extension · Rallonge 32,5 m			38,5 m	Ausladung Radius Portée m
	0°	20°	40°	0°	20°	40°	0°	
14	4,8	-	-	-	-	-	-	14
16	4,8	-	-	3,5	-	-	2,3	16
18	4,7	4,4	-	3,4	-	-	2,2	18
20	4,6	4,2	-	3,3	3,6	-	2,1	20
22	4,6	4,1	3,6	3,3	3,4	3,1	2,0	22
24	4,5	3,9	3,5	3,2	3,3	3,0	1,9	24
26	4,4	3,8	3,5	3,1	3,2	2,8	1,8	26
28	4,3	3,7	3,4	3,0	3,1	2,7	1,7	28
30	4,3	3,6	3,4	2,9	3,0	2,6	1,6	30
32	4,2	3,6	3,4	2,8	2,9	2,5	1,6	32
34	4,1	3,5	3,3	2,8	2,8	2,5	1,5	34
36	3,9	3,4	3,3	2,7	2,7	2,4	1,5	36
38	3,8	3,4	3,3	2,6	2,6	2,3	1,4	38
40	3,7	3,3	3,3	2,5	2,5	2,2	1,4	40
42	3,6	3,3	3,2	2,4	2,5	2,2	1,3	42
44	3,5	3,2	3,2	2,3	2,4	2,1	1,3	44
46	3,4	3,1	3,2	2,3	2,3	2,1	1,3	46
48	3,2	3,0	3,1	2,2	2,2	2,0	1,2	48
50	3,1	2,9	3,1	2,1	2,1	1,9	1,2	50
52	3,0	2,8	3,0	2,1	2,1	1,9	1,2	52
54	2,8	2,7	2,9	2,0	2,0	1,8	1,1	54
56	2,7	2,6	2,8	2,0	1,9	1,8	1,1	56
58	2,6	2,4	2,7	2,0	1,9	1,7	1,0	58
60	2,4	2,3	2,6	1,9	1,8	1,6	-	60
62	2,3	2,1	2,4	1,9	1,7	1,6	-	62
64	2,0	2,0	2,2	1,8	1,7	1,5	-	64
66	1,7	1,8	2,0	1,7	1,6	1,5	-	66
68	1,4	1,6	1,7	1,4	1,5	1,4	-	68
70	1,2	1,3	1,4	1,2	1,4	1,3	-	70
72	-	1,1	-	-	1,1	1,2	-	72
74	-	-	-	-	-	-	-	74

COUNTERWEIGHT

(02) 9709 4099



ACTION

RECOVERY SERVICES PTY. LTD.

A.B.N 25 000 874 224

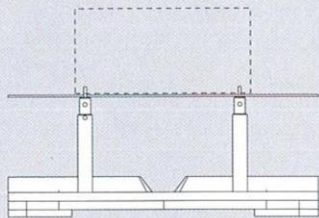
CRANES

Email: cranes@actioncranes.com.au www.actioncranes.com.au

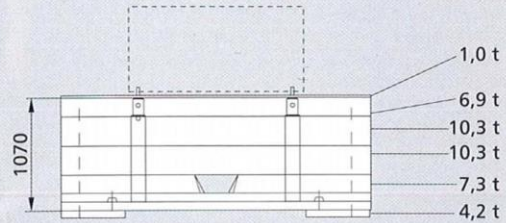
(02) 9709 4099
Fax: (02) 9708 1983

PO BOX 3365
BANKSTOWN CENTRO
NSW 2200

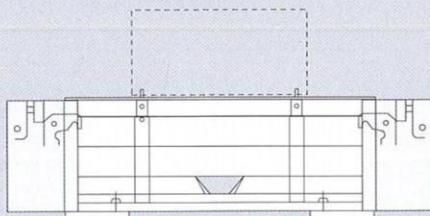
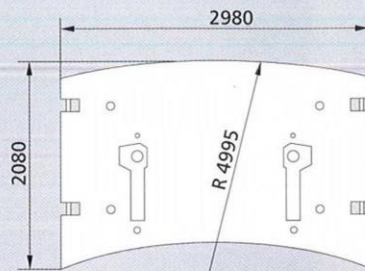
30 GOW ST
PADSTOW NSW 2211



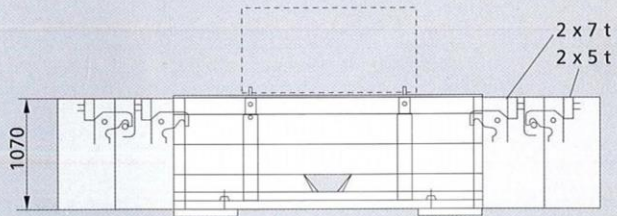
12.5 t counterweight + hoist II
or equivalent weight for hoist II
12,5 t Gegengewicht + Hubwerk II
bzw. Ersatzgewicht für Hubwerk II
12,5 t de contrepoids + treuil II
ou poids équivalent pour treuil II



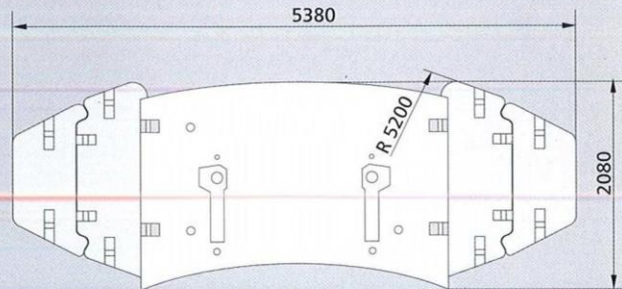
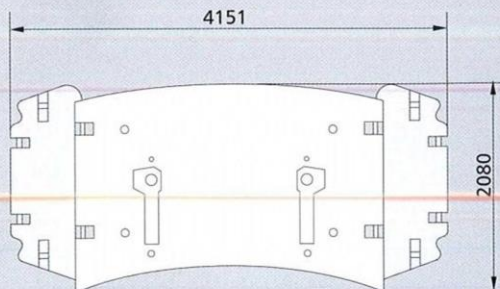
40 t counterweight
40 t Gegengewicht
40 t contrepoids



54 t counterweight (optional)
54 t Gegengewicht (Kundenwunsch)
54 t contrepoids (option)



64 t counterweight (optional)
64 t Gegengewicht (Kundenwunsch)
64 t contrepoids (option)



FOOTPRINT

(02) 9709 4099



ACTION

RECOVERY SERVICES PTY. LTD.

A.B.N 25 000 874 224

CRANES

Email: cranes@actioncranes.com.au www.actioncranes.com.au

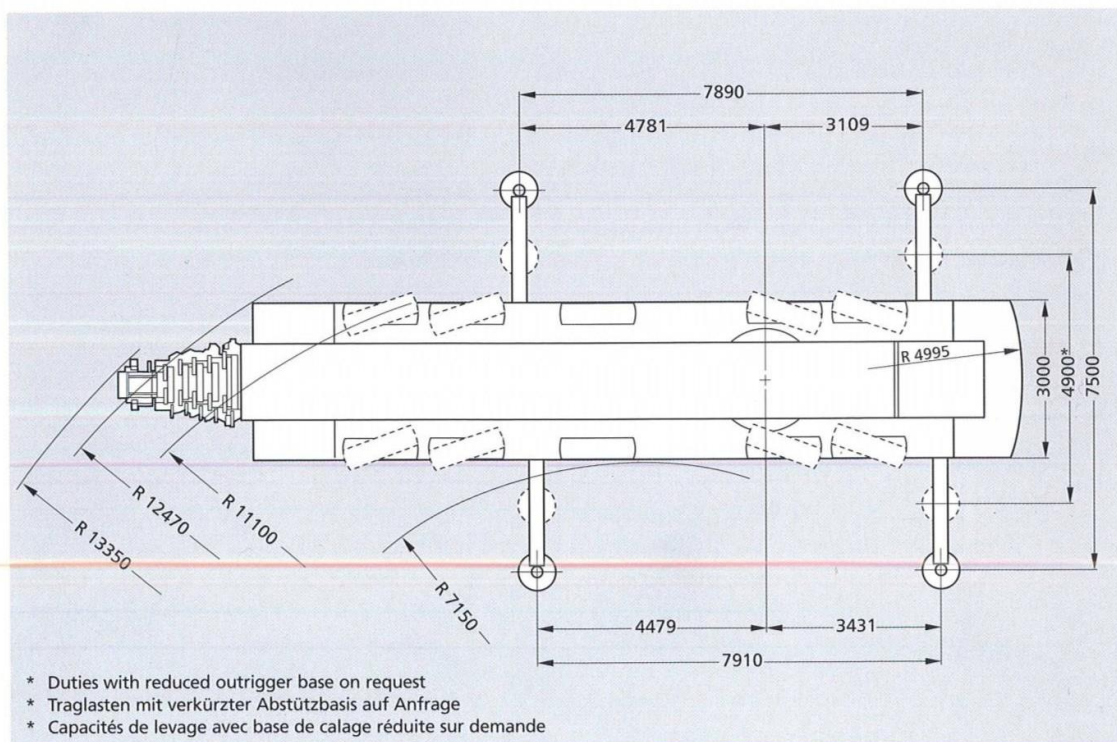
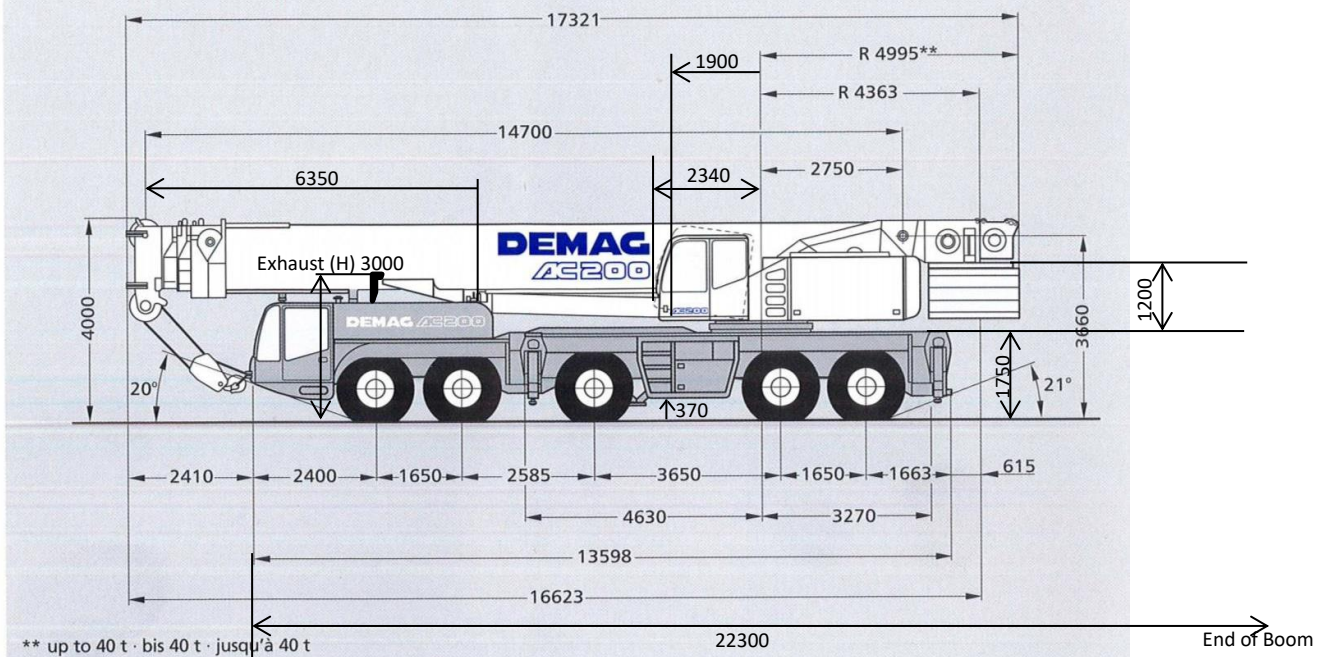
(02) 9709 4099
Fax: (02) 9708 1983

PO BOX 3365
BANKSTOWN CENTRO
NSW 2200

30 GOW ST
PADSTOW NSW 2211

Dimensions of 5-axe carrier (option)
Abmessungen 5-Achs-Fahrgestell (Option)
Encombrement de la 5 essieux (option)

Weight in travel order: 60 t · Transportgewicht: 60 t · Poids total roulant: 60 t



- * Duties with reduced outrigger base on request
- * Traglasten mit verkürzter Abstützbasis auf Anfrage
- * Capacités de levage avec base de calage réduite sur demande

(02) 9709 4099



ACTION

RECOVERY SERVICES PTY. LTD.

A.B.N 25 000 874 224

CRANES

Email: cranes@actioncranes.com.au www.actioncranes.com.au

(02) 9709 4099
Fax: (02) 9708 1983

PO BOX 3365
BANKSTOWN CENTRO
NSW 2200

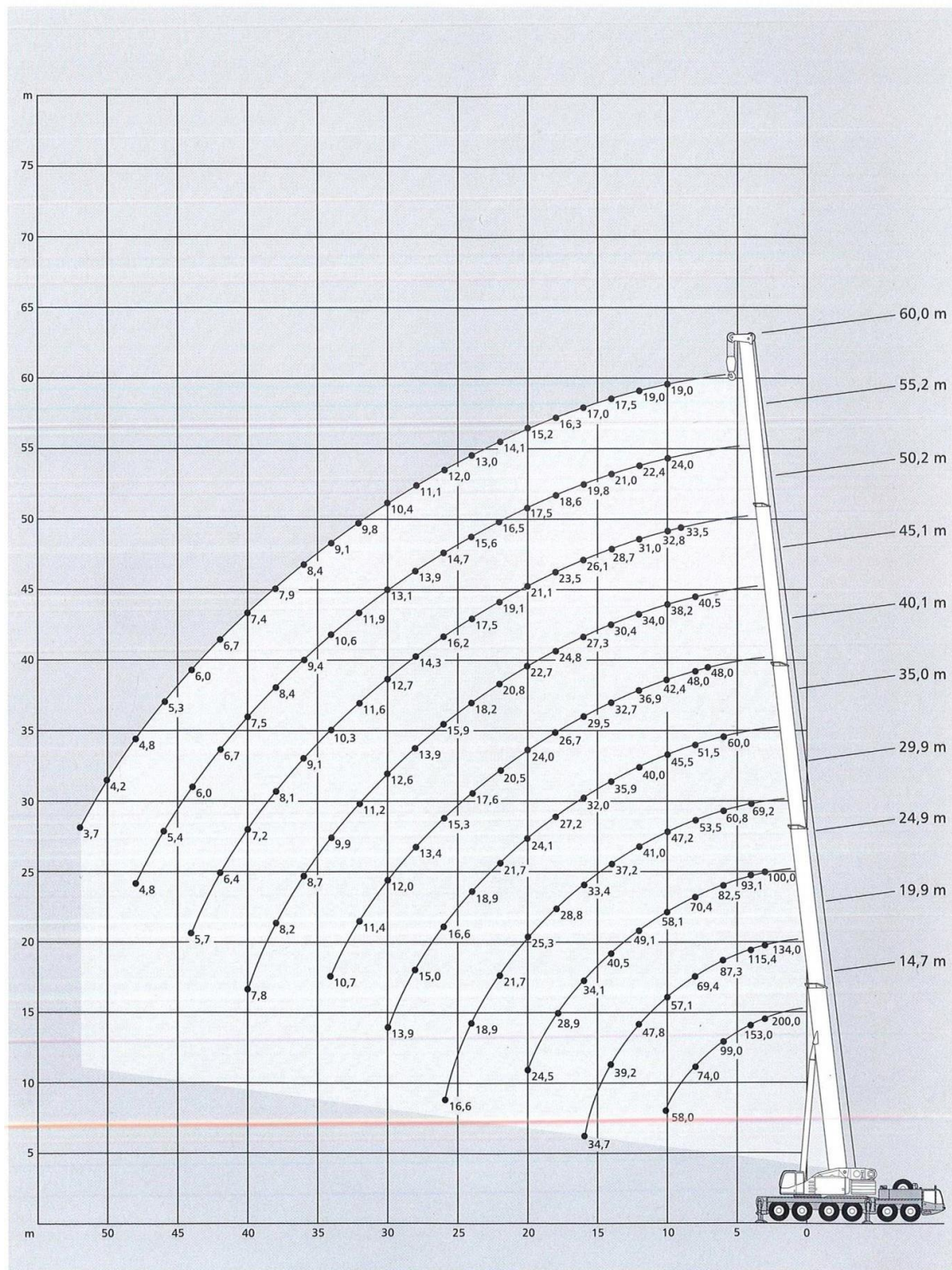
30 GOW ST
PADSTOW NSW 2211

BOOM

Working ranges main boom

Arbeitsbereiche Hauptaussleger

Portées flèche principale



(02) 9709 4099



ACTION

RECOVERY SERVICES PTY. LTD.

A.B.N 25 000 874 224

CRANES

Email: cranes@actioncranes.com.au www.actioncranes.com.au

(02) 9709 4099
Fax: (02) 9708 1983

PO BOX 3365
BANKSTOWN CENTRO
NSW 2200

30 GOW ST
PADSTOW NSW 2211

FLY

Working ranges main boom extension, main boom 60.0 m

Arbeitsbereiche Hauptauslegerverlängerung, Hauptausleger 60,0 m

Portées rallonge de flèche, flèche principale 60,0 m

